

Monaco™

Golf, Multi-Use Sports Fields, Parks, & Lawns

 Drought Tolerant

 Early Green-Up

 Dark Color

Key features

- #1 performing variety in 2016 & 2017; traffic tolerance in Lexington, KY
- Highest seeded turf quality
- Handles high traffic
- Very drought tolerant

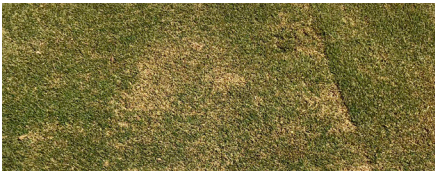
The New Alternative to Bermuda Renovation

In turf quality alone, Monaco is statistically similar to, or even better than 91% of varieties tested in the 2013 NTEP trials. This includes vegetative types!

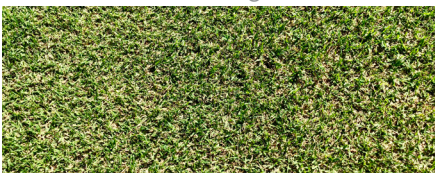


MONACO
BERMUDAGRASS

Tifway Vegetative (Tif 419)



Monaco Elite Bermudagrass



Exclusively from Barenbrug USA, Monaco, the newest release from the Johnston Seed® breeding program, is continuing the legacy founded by Riviera™.

Monaco is a synthetic variety produced by the intercrossing of five clonal parent lines which results in superior genetic integrity and seed quality year in and year out. A highly ranked variety tested in the 2013 NTEP trials, Monaco possesses a rare combination of traits in exceptional wear tolerance, winter hardiness, and spring green-up. These traits produce a quality grass surface that appears early, withstands a multitude of stresses, and stays late into the year.

Technical Information

Uses

Monaco can be used as a durable, high quality playing surface in golf courses, sports fields, and parks. It is not recommended to construct a putting green with Monaco as a base. Monaco also makes a very high quality lawn that can be easily repaired when needed via seed, or used to repair other bermudagrass areas. In terms of matching other varieties, Monaco has a medium to dark green color and is similar in leaf texture to vegetative types such as Patriot, Astro, and Celebration.

Establishment

Monaco rates highly for percent establishment, but extra care should be taken during the first year for complete establishment and competition against weeds. For best results, Monaco should be planted in areas of full sunlight when soil temperatures reach 65°F or greater. Cover seed with no more than 1/4" of soil. Maintain adequate soil moisture around seed using frequent but light irrigation. During the grow-in phase, it is recommended to apply 0.5lbs. Nitrogen per 1000 sq. ft. every two weeks with the first application made 2 weeks after emergence. Continue this schedule for 60-90 days then apply 0.75-1.5lbs. Nitrogen per 1000 sq. ft. each month of the growing season. The management intensity level will determine the amount of nitrogen required monthly. Sports turf installations should use the higher rate while residential lawns may prefer to use the lower rate. It should also be noted that in fall, when Monaco is preparing for dormancy, it is recommended to apply additional amounts of potassium while significantly reducing nitrogen.

Specifications

Seeding Rate:	2-3lbs./M*
Mowing (Recommendation)	0.5-1"
Mowing (Down to)	0.250"

*M=1,000 square feet

Trial Data

Traffic Tolerance: 2013-2017 Average

VARIETY	SCORE
Monaco (#1 in NTEP)	63.8%
Riviera	60.9%
Princess 77	59.2%
LSD	0.3

Turf Quality

VARIETY	SCORE
Monaco	6.3
Riviera	6.3
Princess 77	6.0

Drought Tolerance: 2013 NTEP Final Report

VARIETY	SCORE
Monaco (#1 in NTEP)	6.0
Riviera	5.4
Princess 77	5.1
LSD	0.6

Spring Green-up: 2016 NTEP Trials

VARIETY	SCORE
Monaco	5.3
Riviera	5.2
Yukon	4.9
North Shore SLT	4.9
Princess 77	4.7
Numex-Sahara	4.6
LSD	0.5

Fall Color (November): 2016 NTEP Trials

VARIETY	SCORE
Monaco	5.8
Riviera	5.8
Numex-Sahara	5.7
Kashmir	5.5
Princess 77	5.5
North Shore SLT	5.3
LSD	0.4

Comparison of Available Bermudagrasses

As one can see below, Monaco Elite Bermudagrass is a great option for those seeking the quality of a Hybrid Bermudagrass without the cost!

	HYBRID	MONACO	PANAM	ARIZONA COMMON
Cost	\$\$\$\$\$	\$\$\$	\$\$	\$
Turf Quality High Maintenance	5	4	3	2
Turf Quality Low Maintenance	4	4	3	2
Percent Winterkill	5	5	3	1
Spring Dead Spot	5	5	3	3
Genetic Color	5	4	3	3
Leaf Texture	5	4	3	3

Turfgrass quality and other ratings 1-5; 5 equaling the best

